

A

B

C

D

E

F

修订 REV	标记 MARK	修改摘要 REVISION DESCRIPTION	签名 SIGNATURE	日期 DATE
AO		NEW DWG	WANG	2016-03-12

性能:

额定电流: 0.5A

额定电压: 50V

耐电压: 500V

接触电阻: $\leq 20\text{m}\Omega$ 绝缘电阻: 800M Ω

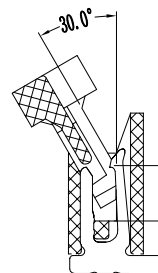
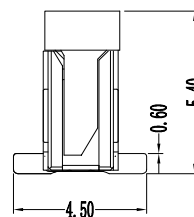
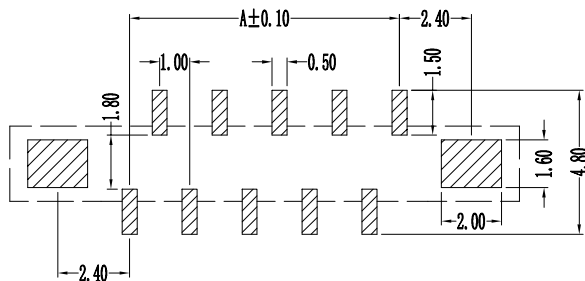
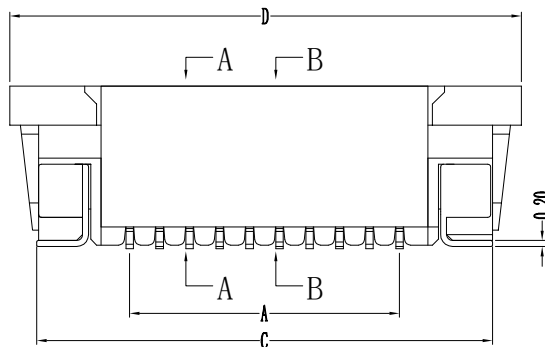
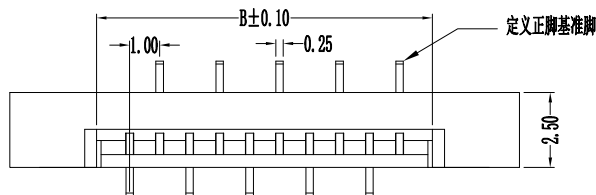
工作温度: -20℃~+85℃

塑件(材质): LCP, UL94V-0

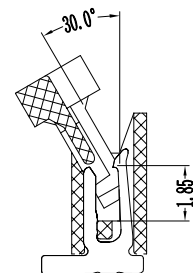
锁扣(材质): LCP, UL94V-0

插簧(材质): 磷青铜, 镀锡/镀金

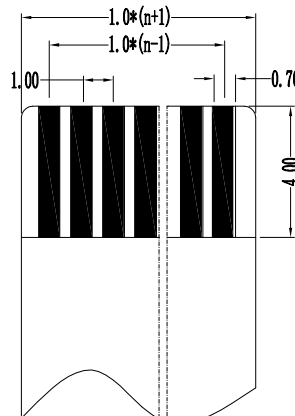
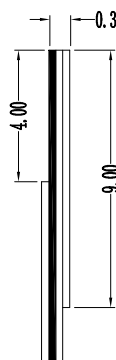
焊片(材质): 磷青铜, 镀锡/镀金



A--A



B--B



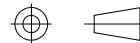
适用扁平电缆



深圳市华德共创科技有限公司

Shenzhen Huade co-create Technology Co.,LTD

电话: 0755-27129737 传真: 0755-29940187

-TOLERANCES-
UNLESS OTHERWISE SPECIFIED
公差参数表TITLE:
产品名称: 1.0mm FPC(E型) 立贴式有焊片正脚

X.X ±0.30 X.X* ±3°

APPD:
核准: XIEPART NO:
产品编号: 1.0K-GL-nPB

X.XX ±0.20 X.XX* ±2°

CHECK:
校对: WANG

DATE SCALE UNIT CODE NUMBER

X.XXX ±0.10 X.XXX* ±1°

DRAW:
绘图: WANG

2016-03-12

1:1

mm

A001

孔位

A

B

C

D

2 1 3.15 7.2 9.1

3 2 4.15 8.2 10.1

4 3 5.15 9.2 11.1

5 4 6.15 10.2 12.1

6 5 7.15 11.2 13.1

7 6 8.15 12.2 14.1

8 7 9.15 13.2 15.1

9 8 10.15 14.2 16.1

10 9 11.15 15.2 17.1

11 10 12.15 16.2 18.1

12 11 13.15 17.2 19.1

13 12 14.15 18.2 20.1

14 13 15.15 19.2 21.1

15 14 16.15 20.2 22.1

16 15 17.15 21.2 23.1

17 16 18.15 22.2 24.1

18 17 19.15 23.2 25.1

19 18 20.15 24.2 26.1

20 19 21.15 25.2 27.1

21 20 22.15 26.2 28.1

22 21 23.15 27.2 29.1

23 22 24.15 28.2 30.1

24 23 25.15 29.2 31.1

25 24 26.15 30.2 32.1

26 25 27.15 31.2 33.1

27 26 28.15 32.2 34.1

28 27 29.15 33.2 35.1

29 28 30.15 34.2 36.1

30 29 31.15 35.2 37.1

31 30 32.15 36.2 38.1

32 31 33.15 37.2 39.1

33 32 34.15 38.2 40.1

34 33 35.15 39.2 41.1

35 34 36.15 40.2 42.1

A

B

C

D

E

F