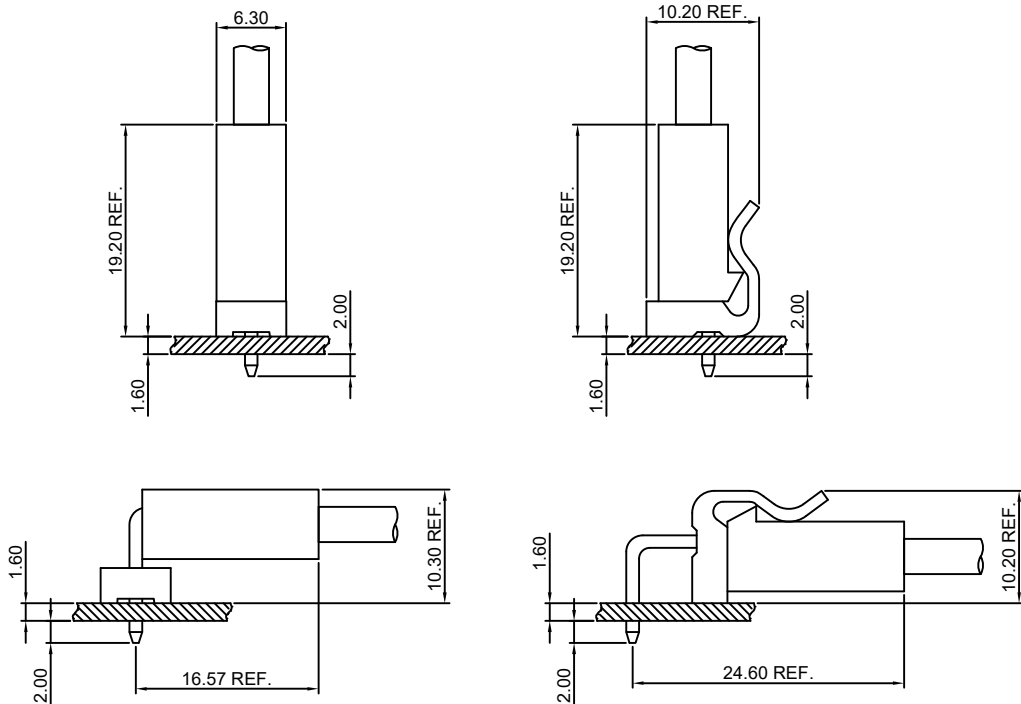


## Specifications

- Current rating:7A AC,DC
- Voltage rating:250V AC,DC
- Temperature range:-25°C~+85°C
- Contact resistance:10mΩMax.
- Insulation resistance:1000MΩMin.
- Withstanding voltage:1500V AC/minute
- \*Compliant with RoHS and REACH\*
- \*Meet the HF/Halogen Free,GWT/Glow wire Test (IEC60335-1) request,need to customize\*
- \*Contact HDGC for details\*

## Assembly layout





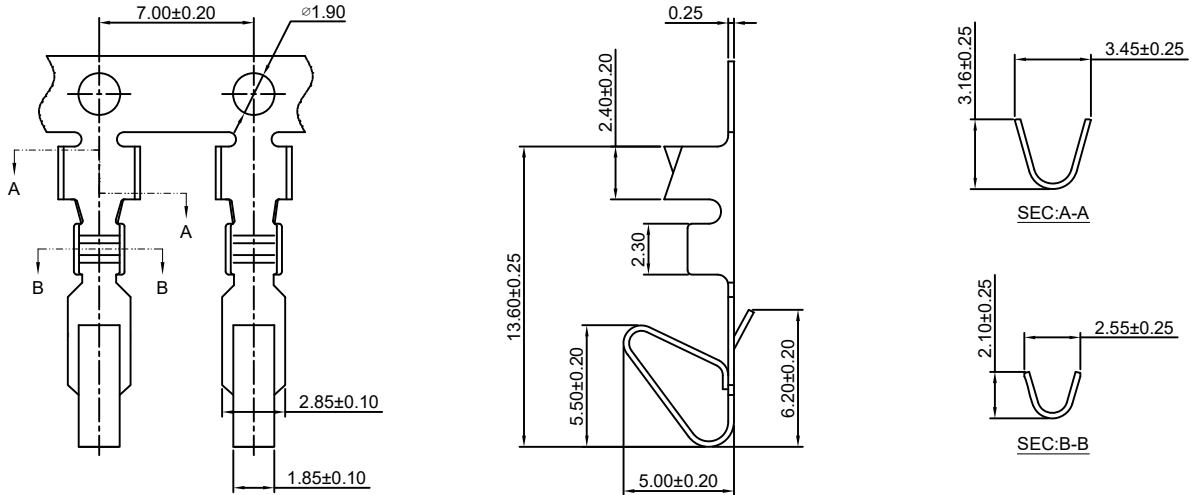
## HDGC3961 Series 3.96mm (.156") -7.92mm (.312") Pitch Wire to Board Connector

### HDGC3961-T

3.96mm pitch Crimp Terminal

#### Reference Informations:

\*Used in HDGC3961H-XP, H-XP-2, H-XP-3, HDGC5081H-XP series Housing



Ordering information & Specifications:

Unit:mm

Part NO.	Wire Range	Insulation O.D.	Material	Finish	Qty/reel
HDGC3961-TB	AWG#18-#24	2.80mm(max)	Brass	Tin over Nickel	6,000 PCS
HDGC3961-TP	AWG#18-#24	2.80mm(max)	Phosphor Bronze	Tin over Nickel	6,000 PCS
HDGC3961-GB	AWG#18-#24	2.80mm(max)	Brass	Gold over Nickel	6,000 PCS
HDGC3961-GP	AWG#18-#24	2.80mm(max)	Phosphor Bronze	Gold over Nickel	6,000 PCS

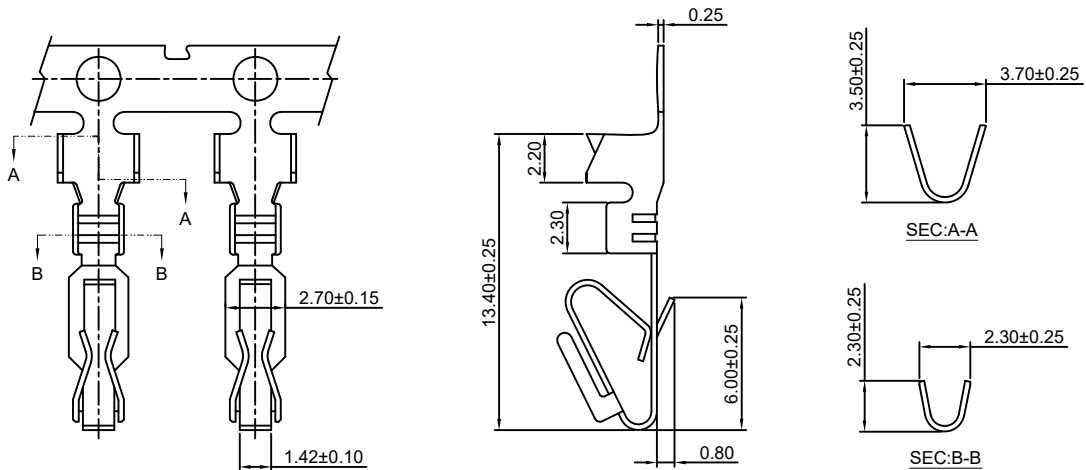
Optional Gold plating available but MOQ requested

### HDGC3961-T-1

3.96mm pitch Crimp Terminal

#### Reference Informations:

\*Used in HDGC3961H-XP, H-XP-2, H-XP-3, HDGC5081H-XP series Housing



Ordering information & Specifications:

Unit:mm

Part NO.	Wire Range	Insulation O.D.	Material	Finish	Qty/reel
HDGC3961-TB-1	AWG#18-#24	2.80mm(max)	Brass	Tin over Nickel	6,000 PCS
HDGC3961-TP-1	AWG#18-#24	2.80mm(max)	Phosphor Bronze	Tin over Nickel	6,000 PCS
HDGC3961-GB-1	AWG#18-#24	2.80mm(max)	Brass	Gold over Nickel	6,000 PCS
HDGC3961-GP-1	AWG#18-#24	2.80mm(max)	Phosphor Bronze	Gold over Nickel	6,000 PCS

Optional Gold plating available but MOQ requested



## HDGC3961 Series 3.96mm (.156") -7.92mm (.312") Pitch Wire to Board Connector

### HDGC3961H-XP

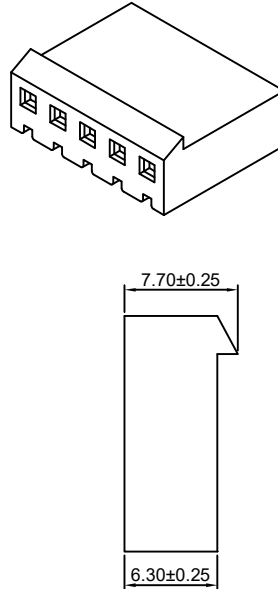
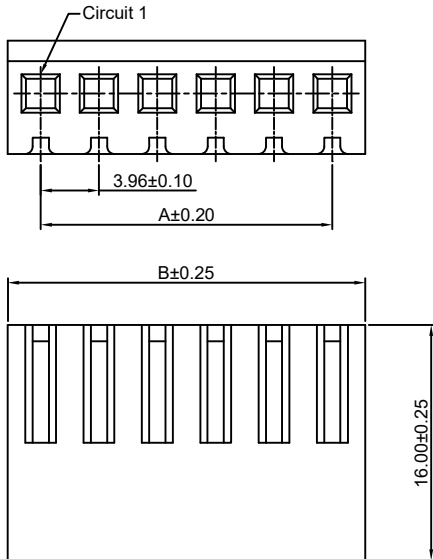
3.96mm pitch Housing

**Reference Informations:**

- \*Material: Nylon 66, UL94V-2
- \*Suitable HDGC3961-T(-1) series Terminal
- \*Mates with HDGC3961WV, WR, WVA, WRA-XP(-A), HDGC3961WV, WVA-XP-R(-A), WVB-F, WRB-F-XP, HDGC3961WVB, WRB, WVC, WRC-XP series Wafer
- \*Color: Natural

**Ordering Information:**

- HDGC3961H-XP - \*\*\*  
 $\frac{1}{2}$
1. Part No.
  2. Material:  
 (blank): Nylon 66, UL94V-2  
 V0: Nylon 66, UL94V-0  
 GWT: Nylon 66, UL94V-0, GWT 750°C



**Ordering Information & Dimensions:**

PART NO.	Dimensions	
	A	B
2P	3.96	8.43
3P	7.92	12.39
4P	11.88	16.35
5P	15.84	20.31
6P	19.80	24.27
7P	23.76	28.23
8P	27.72	32.19
9P	31.68	36.15
10P	35.64	40.11
11P	39.60	44.07
12P	43.56	48.03
13P	47.52	51.99
14P	51.48	55.95
15P	55.44	59.91
16P	59.40	63.87
17P	63.36	67.83
18P	67.32	71.79
19P	71.28	75.75
20P	75.24	79.71
21P	79.20	83.67
22P	83.16	87.63
23P	87.12	91.59
24P	91.08	95.55

Unit: mm

### HDGC3961H-XP-2

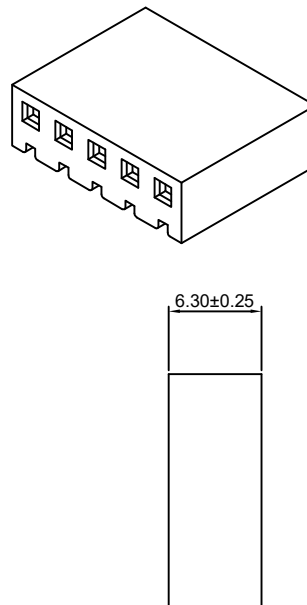
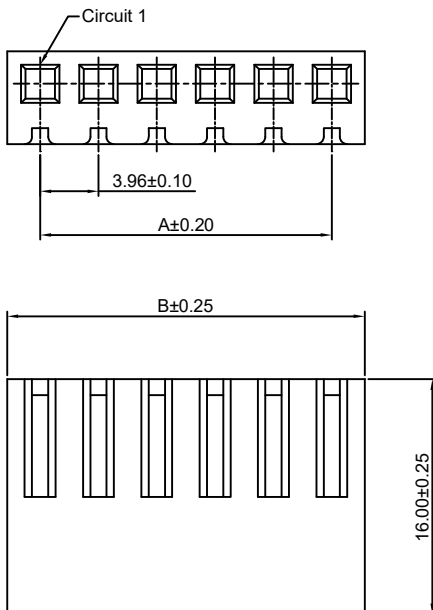
3.96mm pitch Housing

**Reference Informations:**

- \*Material: Nylon 66, UL94V-2
- \*Suitable HDGC3961-T(-1) series Terminal
- \*Mates with HDGC3961WV, WR, WVA, WRA-XP(-A), HDGC3961WV, WVA-XP-R(-A), WVB-F, WRB-F-XP, HDGC3961WVB, WRB, WVC, WRC-XP series Wafer
- \*Color: Natural

**Ordering Information:**

- HDGC3961H-XP-2 - \*\*\*  
 $\frac{1}{2}$
1. Part No.
  2. Material:  
 (blank): Nylon 66, UL94V-2  
 V0: Nylon 66, UL94V-0  
 GWT: Nylon 66, UL94V-0, GWT 750°C



**Ordering Information & Dimensions:**

PART NO.	Dimensions	
	A	B
2P	3.96	8.43
3P	7.92	12.39
4P	11.88	16.35
5P	15.84	20.31
6P	19.80	24.27
7P	23.76	28.23
8P	27.72	32.19
9P	31.68	36.15
10P	35.64	40.11
11P	39.60	44.07
12P	43.56	48.03
13P	47.52	51.99
14P	51.48	55.95
15P	55.44	59.91
16P	59.40	63.87
17P	63.36	67.83
18P	67.32	71.79
19P	71.28	75.75
20P	75.24	79.71
21P	79.20	83.67
22P	83.16	87.63
23P	87.12	91.59
24P	91.08	95.55

Unit: mm



## HDGC3961 Series 3.96mm (.156") -7.92mm (.312") Pitch Wire to Board Connector

### HDGC3961H-XP-3-V0

3.96mm pitch Housing

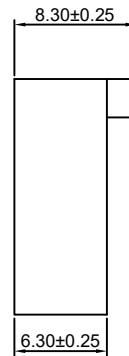
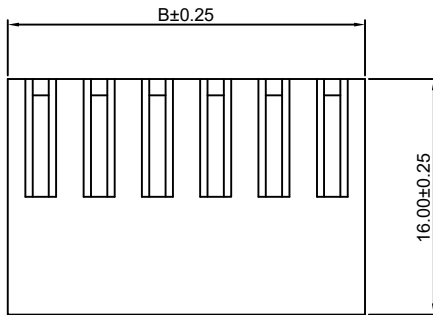
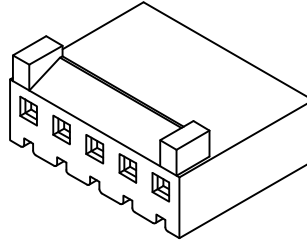
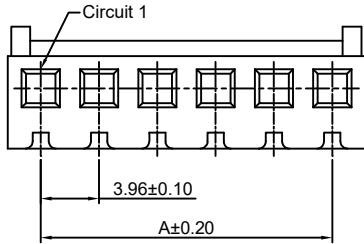
#### Reference Informations:

- \*Material:Nylon 66,UL94V-0
- \*Suitable HDGC3961-T(-1) series Terminal
- \*Mates with HDGC3961WVA,WRA-XP(-A), HDGC3961WVA-XP-R(-A),WVB-F,WRB-XP, HDGC3961WVB,WRB-XP,HDGC3969WV,WR-XP series Wafer
- \*Color:Natural

#### Ordering Information:

HDGC3961H-XP-3 - \*\*\*  
1 2

- Part No.
- Material:  
V0:Nylon 66,UL94V-0  
GWT:Nylon 66,UL94V-0,GWT 750°C



#### Ordering Information & Dimensions:

PART NO.	Dimensions	
	A	B
2P	3.96	8.43
3P	7.92	12.39
4P	11.88	16.35
5P	15.84	20.31
6P	19.80	24.27
7P	23.76	28.23
8P	27.72	32.19
9P	31.68	36.15
10P	35.64	40.11
11P	39.60	44.07
12P	43.56	48.03
13P	47.52	51.99
14P	51.48	55.95
15P	55.44	59.91
16P	59.40	63.87
17P	63.36	67.83
18P	67.32	71.79
19P	71.28	75.75
20P	75.24	79.71
21P	79.20	83.67
22P	83.16	87.63
23P	87.12	91.59
24P	91.08	95.55

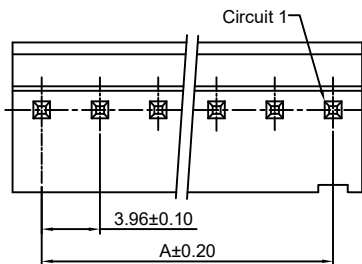
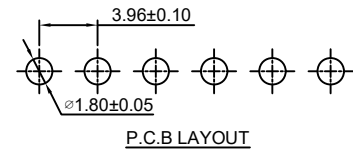
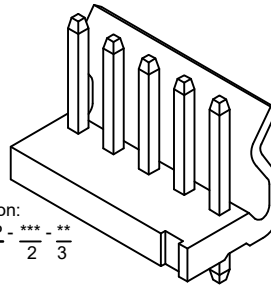
Unit: mm

### HDGC3961WV-XP

3.96mm pitch 180° Wafer

#### Reference Informations:

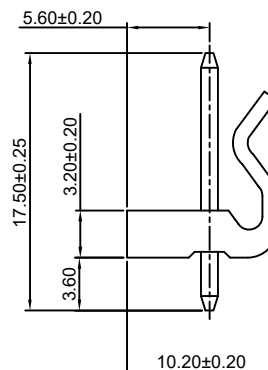
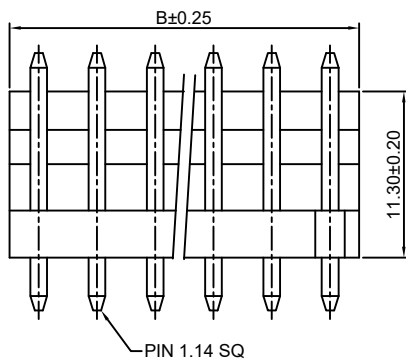
- \*Material:Pin:Brass/Tin over Nickel  
Insulator:Nylon 66,UL94V-2
- \*Mates with HDGC3961H-XP(-2) or HDGC3964H-XP, HDGC3964H-XP-A,HDGC3964H-XP-C series Housing
- \*Color:Natural



#### Ordering Information:

HDGC3961WV-XP - \*\*\* - \*\*  
1 2 3

- Part No.
- Material:  
(blank):Nylon 66,UL94V-2  
V0:Nylon 66,UL94V-0  
GWT:Nylon 66,UL94V-0,GWT 750°C
- Finish:  
(blank):Tin over Nickel  
G:Gold over Nickel



#### Ordering Information & Dimensions:

PART NO.	Dimensions	
	A	B
2P	3.96	8.43
3P	7.92	12.39
4P	11.88	16.35
5P	15.84	20.31
6P	19.80	24.27
7P	23.76	28.23
8P	27.72	32.19
9P	31.68	36.15
10P	35.64	40.11
11P	39.60	44.07
12P	43.56	48.03
13P	47.52	51.99
14P	51.48	55.95
15P	55.44	59.91
16P	59.40	63.87
17P	63.36	67.83
18P	67.32	71.79
19P	71.28	75.75
20P	75.24	79.71
21P	79.20	83.67
22P	83.16	87.63
23P	87.12	91.59
24P	91.08	95.55

Unit: mm



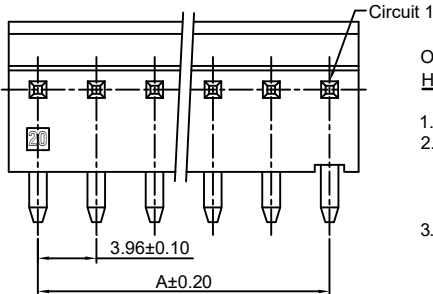
## HDGC3961 Series 3.96mm (.156") -7.92mm (.312") Pitch Wire to Board Connector

### HDGC3961WR-XP

3.96mm pitch 90° Wafer

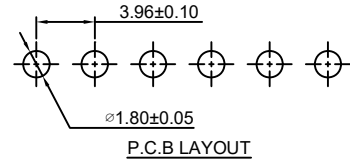
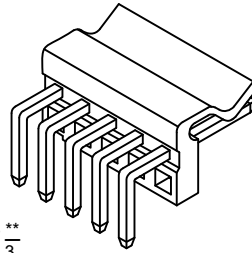
**Reference Informations:**

- \*Material:Pin:Brass/Tin over Nickel  
Insulator:Nylon 66,UL94V-2
- \*Mates with HDGC3961H-XP(-2) or HDGC3964H-XP,  
HDGC3964H-XP-A,HDGC3964H-XP-C series Housing
- \*Color:Natural



Ordering Information:  
HDGC3961WR-XP - \*\*\* - \*\*  
1 2 3

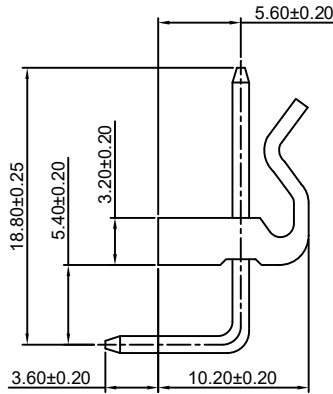
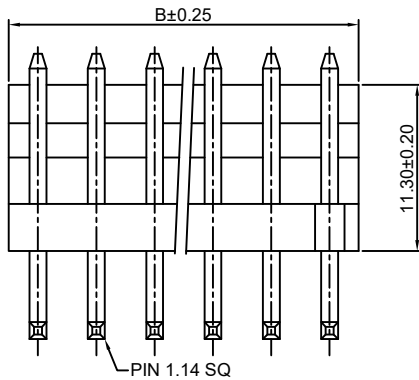
- 1.Part No.
- 2.Material:  
(blank):Nylon 66,UL94V-2  
V0:Nylon 66,UL94V-0  
GWT:Nylon 66,UL94V-0,GWT 750°C
- 3.Finish:  
(blank):Tin over Nickel  
G:Gold over Nickel



Ordering Information & Dimensions:

PART NO.	Dimensions	
	A	B
2P	3.96	7.92
3P	7.92	11.88
4P	11.88	15.84
5P	15.84	19.80
6P	19.80	23.76
7P	23.76	27.72
8P	27.72	31.68
9P	31.68	35.64
10P	35.64	39.60
11P	39.60	43.56
12P	43.56	47.52
13P	47.52	51.48
14P	51.48	55.44
15P	55.44	59.40
16P	59.40	63.36
17P	63.36	67.32
18P	67.32	71.28
19P	71.28	75.24
20P	75.24	79.20
21P	79.20	83.16
22P	83.16	87.12
23P	87.12	91.08
24P	91.08	95.04

Unit: mm

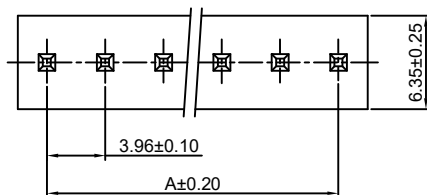


### HDGC3961WVA-XP

3.96mm pitch 180° Wafer

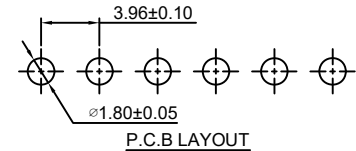
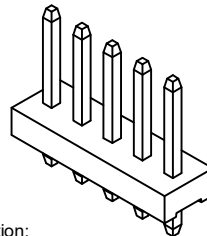
**Reference Informations:**

- \*Material:Pin:Brass/Tin over Nickel  
Insulator:Nylon 66,UL94V-2
- \*Mates with HDGC3961H-XP(-2/-3) or HDGC3964H-XP,  
HDGC3964H-XP-A,H-XP-B,H-XP-C series Housing
- \*Color:Natural



Ordering Information:  
HDGC3961WVA-XP - \*\*\* - \*\*  
1 2 3

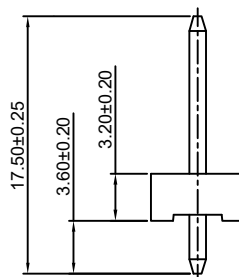
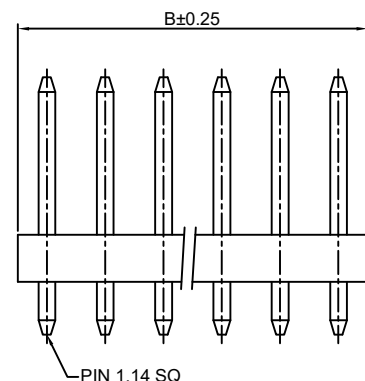
- 1.Part No.
- 2.Material:  
(blank):Nylon 66,UL94V-2  
V0:Nylon 66,UL94V-0  
GWT:Nylon 66,UL94V-0,GWT 750°C
- 3.Finish:  
(blank):Tin over Nickel  
G:Gold over Nickel



Ordering Information & Dimensions:

PART NO.	Dimensions	
	A	B
2P	3.96	7.92
3P	7.92	11.88
4P	11.88	15.84
5P	15.84	19.80
6P	19.80	23.76
7P	23.76	27.72
8P	27.72	31.68
9P	31.68	35.64
10P	35.64	39.60
11P	39.60	43.56
12P	43.56	47.52
13P	47.52	51.48
14P	51.48	55.44
15P	55.44	59.40
16P	59.40	63.36
17P	63.36	67.32
18P	67.32	71.28
19P	71.28	75.24
20P	75.24	79.20
21P	79.20	83.16
22P	83.16	87.12
23P	87.12	91.08
24P	91.08	95.04

Unit: mm





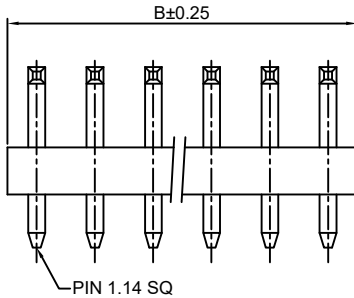
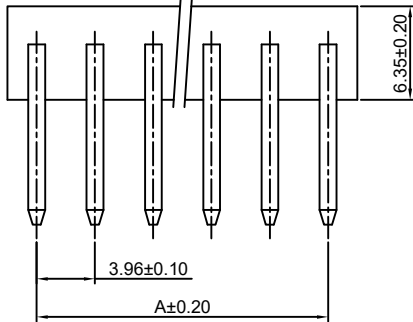
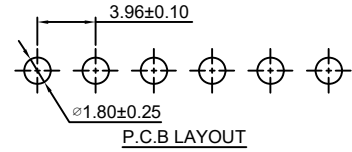
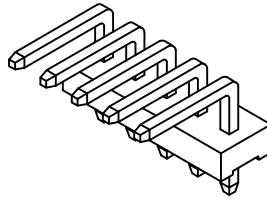
## HDGC3961 Series 3.96mm (.156") -7.92mm (.312") Pitch Wire to Board Connector

### HDGC3961WRA-XP

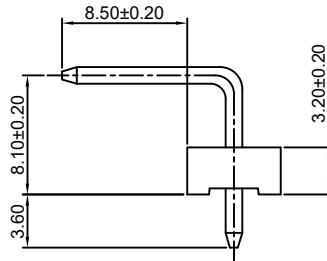
3.96mm pitch 90° Wafer

#### Reference Informations:

- \*Material: Pin: Brass/Tin over Nickel  
Insulator: Nylon 66, UL94V-2
- \*Mates with HDGC3961H-XP(-2/-3) or HDGC3964H-XP, HDGC3964H-XP-A, H-XP-B, H-XP-C series Housing
- \*Color: Natural



- Ordering Information:  
**HDGC3961WRA-XP** -  $\frac{***}{1} - \frac{**}{2} \frac{**}{3}$
- Part No.
  - Material:  
(blank): Nylon 66, UL94V-2  
V0: Nylon 66, UL94V-0  
GWT: Nylon 66, UL94V-0, GWT 750°C
  - Finish:  
(blank): Tin over Nickel  
G: Gold over Nickel



#### Ordering Information & Dimensions:

PART NO.	Dimensions	
	A	B
2P	3.96	7.92
3P	7.92	11.88
4P	11.88	15.84
5P	15.84	19.80
6P	19.80	23.76
7P	23.76	27.72
8P	27.72	31.68
9P	31.68	35.64
10P	35.64	39.60
11P	39.60	43.56
12P	43.56	47.52
13P	47.52	51.48
14P	51.48	55.44
15P	55.44	59.40
16P	59.40	63.36
17P	63.36	67.32
18P	67.32	71.28
19P	71.28	75.24
20P	75.24	79.20
21P	79.20	83.16
22P	83.16	87.12
23P	87.12	91.08
24P	91.08	95.04

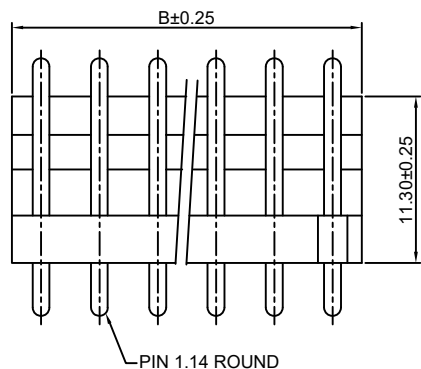
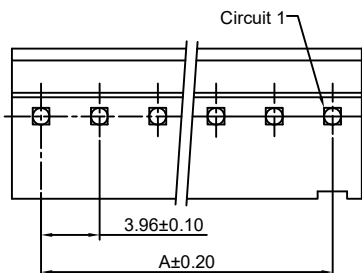
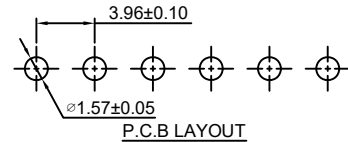
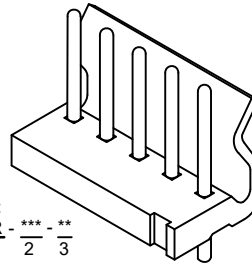
Unit: mm

### HDGC3961WV-XP-R

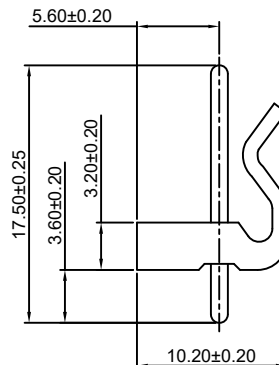
3.96mm pitch 180° Wafer, Round PIN

#### Reference Informations:

- \*Material: Pin: Brass/Tin over Nickel  
Insulator: Nylon 66, UL94V-2
- \*Mates with HDGC3961H-XP(-2) or HDGC3964H-XP, HDGC3964H-XP-A, HDGC3964H-XP-C series Housing
- \*Color: Natural



- Ordering Information:  
**HDGC3961WV-XP-R** -  $\frac{***}{1} - \frac{**}{2} \frac{**}{3}$
- Part No.
  - Material:  
(blank): Nylon 66, UL94V-2  
V0: Nylon 66, UL94V-0  
GWT: Nylon 66, UL94V-0, GWT 750°C
  - Finish:  
(blank): Tin over Nickel  
G: Gold over Nickel



#### Ordering Information & Dimensions:

PART NO.	Dimensions	
	A	B
2P	3.96	7.92
3P	7.92	11.88
4P	11.88	15.84
5P	15.84	19.80
6P	19.80	23.76
7P	23.76	27.72
8P	27.72	31.68
9P	31.68	35.64
10P	35.64	39.60
11P	39.60	43.56
12P	43.56	47.52
13P	47.52	51.48
14P	51.48	55.44
15P	55.44	59.40
16P	59.40	63.36
17P	63.36	67.32
18P	67.32	71.28
19P	71.28	75.24
20P	75.24	79.20
21P	79.20	83.16
22P	83.16	87.12
23P	87.12	91.08
24P	91.08	95.04

Unit: mm



# HDGC3961 SERIES



## HDGC3961 Series 3.96mm (.156") -7.92mm (.312") Pitch Wire to Board Connector

### HDGC3961WVA-XP-R

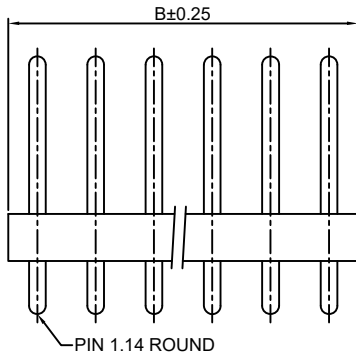
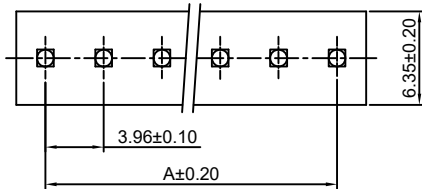
3.96mm pitch 180° Wafer, Round PIN

#### Reference Informations:

\*Material: Pin: Brass/Tin over Nickel  
Insulator: Nylon 66, UL94V-2

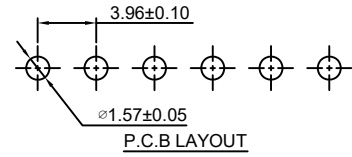
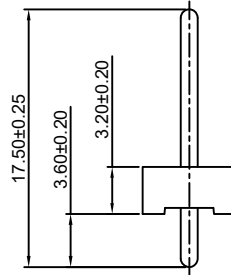
\*Mates with HDGC3961H-XP(-2/-3) or HDGC3964H-XP, HDGC3964H-XP-A, H-XP-B, H-XP-C series Housing

\*Color: Natural



Ordering Information:  
HDGC3961WVA-XP-R - \*\*\*  
1 2

- Part No.
- Material:  
(blank): Nylon 66, UL94V-2  
V0: Nylon 66, UL94V-0  
GWT: Nylon 66, UL94V-0, GWT 750°C
- Finish:  
(blank): Tin over Nickel  
G: Gold over Nickel



Ordering Information & Dimensions:

PART NO.	Dimensions	
	A	B
2P	3.96	7.92
3P	7.92	11.88
4P	11.88	15.84
5P	15.84	19.80
6P	19.80	23.76
7P	23.76	27.72
8P	27.72	31.68
9P	31.68	35.64
10P	35.64	39.60
11P	39.60	43.56
12P	43.56	47.52
13P	47.52	51.48
14P	51.48	55.44
15P	55.44	59.40
16P	59.40	63.36
17P	63.36	67.32
18P	67.32	71.28
19P	71.28	75.24
20P	75.24	79.20
21P	79.20	83.16
22P	83.16	87.12
23P	87.12	91.08
24P	91.08	95.04

Unit: mm

### HDGC3961WV-XP-A

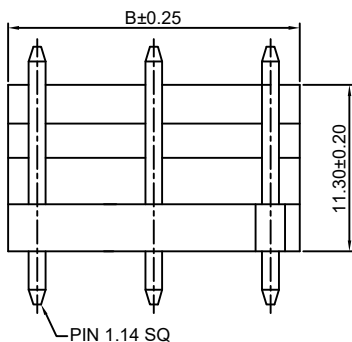
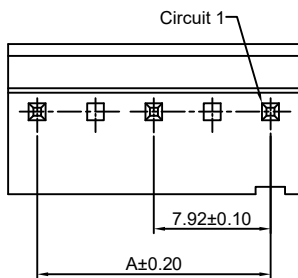
7.92mm pitch 180° Wafer

#### Reference Informations:

\*Material: Pin: Brass/Tin over Nickel  
Insulator: Nylon 66, UL94V-2

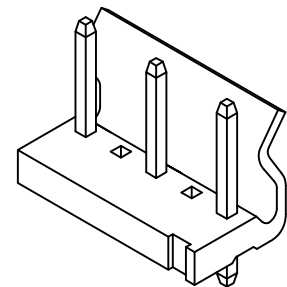
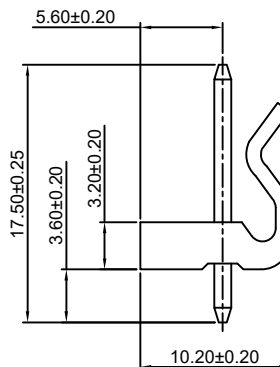
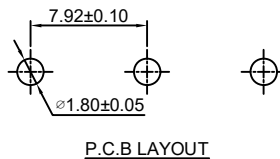
\*Mates with HDGC3961H-XP(-2) or HDGC3964H-XP, HDGC3964H-XP-A, HDGC3964H-XP-C series Housing

\*Color: Natural



Ordering Information:  
HDGC3961WV-XP-A - \*\*\* - \*\*  
1 2 3

- Part No.
- Material:  
(blank): Nylon 66, UL94V-2  
V0: Nylon 66, UL94V-0  
GWT: Nylon 66, UL94V-0, GWT 750°C
- Finish:  
(blank): Tin over Nickel  
G: Gold over Nickel



Ordering Information & Dimensions:

PART NO.	Dimensions	
	A	B
3P	7.92	11.88
5P	15.84	19.80
7P	23.76	27.72
9P	31.68	35.64
11P	39.60	43.56
13P	47.52	51.48
15P	55.44	59.40
17P	63.36	67.32
19P	71.28	75.24

Unit: mm



## HDGC3961 Series 3.96mm (.156") -7.92mm (.312") Pitch Wire to Board Connector

### HDGC3961WR-XP-A

7.92mm pitch 90° Wafer

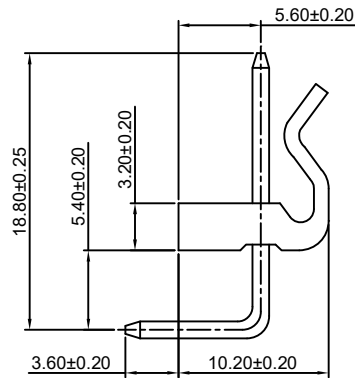
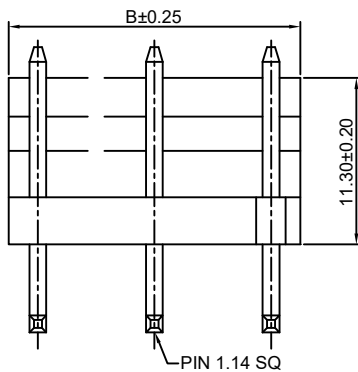
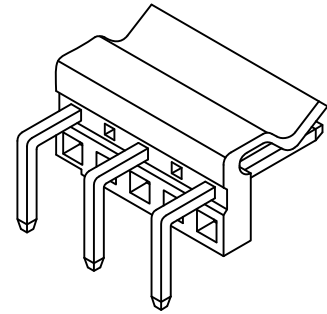
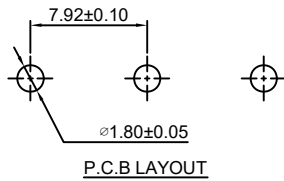
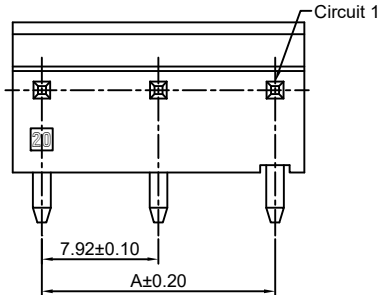
#### Reference Informations:

- \*Material: Pin: Brass/Tin over Nickel  
Insulator: Nylon 66, UL94V-2
- \*Mates with HDGC3961H-XP(-2) or HDGC3964H-XP, HDGC3964H-XP-A, HDGC3964H-XP-C series Housing
- \*Color: Natural

#### Ordering Information:

HDGC3961WR-XP-A -  $\frac{***}{1} - \frac{**}{2} - \frac{**}{3}$

1. Part No.
2. Material:  
(blank): Nylon 66, UL94V-2  
V0: Nylon 66, UL94V-0  
GWT: Nylon 66, UL94V-0, GWT 750°C
3. Finish:  
(blank): Tin over Nickel  
G: Gold over Nickel



#### Ordering Information & Dimensions:

PART NO.	Dimensions	
	A	B
3P	7.92	11.88
5P	15.84	19.80
7P	23.76	27.72
9P	31.68	35.64
11P	39.60	43.56
13P	47.52	51.48
15P	55.44	59.40
17P	63.36	67.32
19P	71.28	75.24

Unit: mm

### HDGC3961WVA-XP-A

7.92mm pitch 180° Wafer

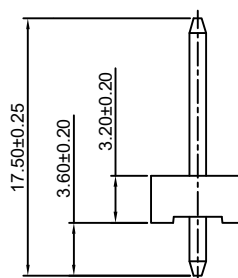
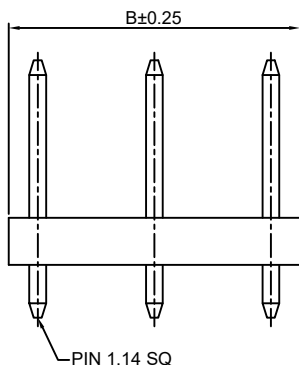
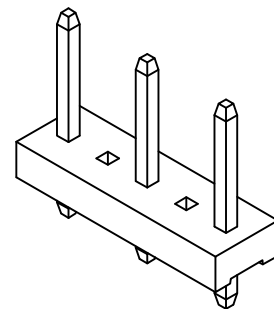
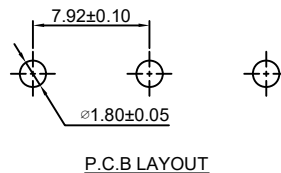
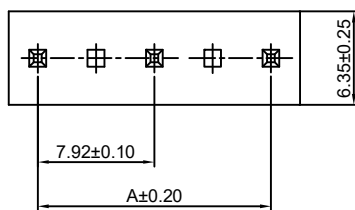
#### Reference Informations:

- \*Material: Pin: Brass/Tin over Nickel  
Insulator: Nylon 66, UL94V-2
- \*Mates with HDGC3961H-XP(-2/-3) or HDGC3964H-XP, HDGC3964H-XP-A, H-XP-B, H-XP-C series Housing
- \*Color: Natural

#### Ordering Information:

HDGC3961WVA-XP-A -  $\frac{***}{1} - \frac{**}{2} - \frac{**}{3}$

1. Part No.
2. Material:  
(blank): Nylon 66, UL94V-2  
V0: Nylon 66, UL94V-0  
GWT: Nylon 66, UL94V-0, GWT 750°C
3. Finish:  
(blank): Tin over Nickel  
G: Gold over Nickel



#### Ordering Information & Dimensions:

PART NO.	Dimensions	
	A	B
3P	7.92	11.88
5P	15.84	19.80
7P	23.76	27.72
9P	31.68	35.64
11P	39.60	43.56
13P	47.52	51.48
15P	55.44	59.40
17P	63.36	67.32
19P	71.28	75.24

Unit: mm





## HDGC3961 Series 3.96mm (.156") -7.92mm (.312") Pitch Wire to Board Connector

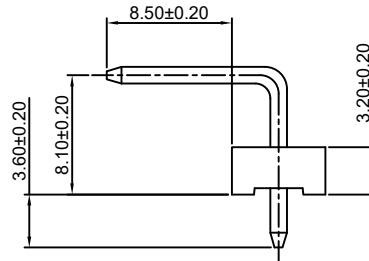
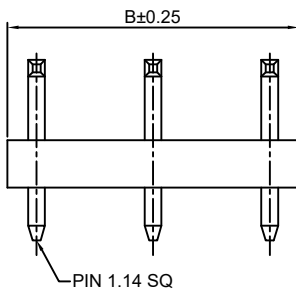
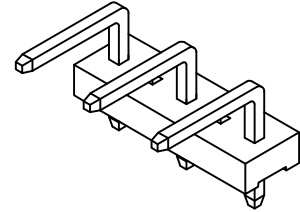
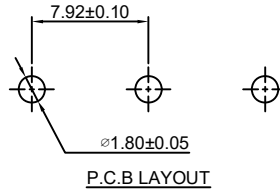
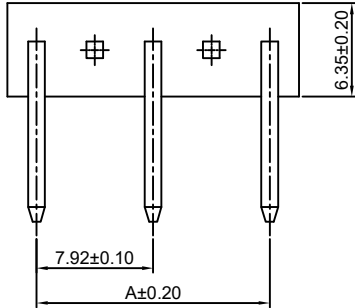
### HDGC3961WRA-XP-A

7.92mm pitch 90° Wafer

#### Reference Informations:

- \*Material: Pin: Brass/Tin over Nickel  
Insulator: Nylon 66, UL94V-2
- \*Mates with HDGC3961H-XP(-2/-3) or HDGC3964H-XP, HDGC3964H-XP-A, H-XP-B, H-XP-C series Housing
- \*Color: Natural

- Ordering Information:  
**HDGC3961WRA-XP-A** - \*\*\* - \*\*  
 1 2 3
1. Part No.
  2. Material:  
(blank): Nylon 66, UL94V-2  
V0: Nylon 66, UL94V-0  
GWT: Nylon 66, UL94V-0, GWT 750°C
  3. Finish:  
(blank): Tin over Nickel  
G: Gold over Nickel



#### Ordering Information & Dimensions:

PART NO.	Dimensions	
	A	B
3P	7.92	11.88
5P	15.84	19.80
7P	23.76	27.72
9P	31.68	35.64
11P	39.60	43.56
13P	47.52	51.48
15P	55.44	59.40
17P	63.36	67.32
19P	71.28	75.24

Unit: mm

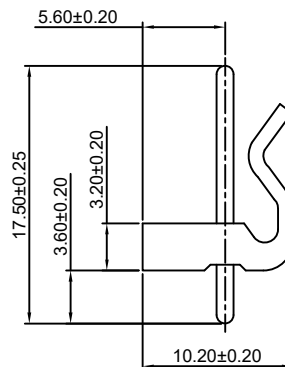
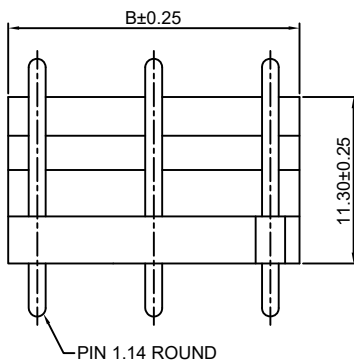
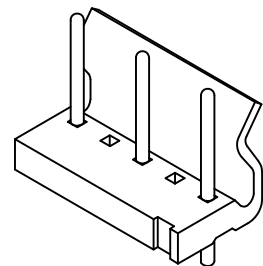
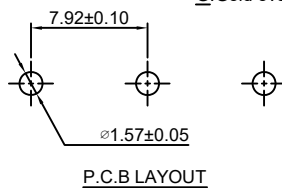
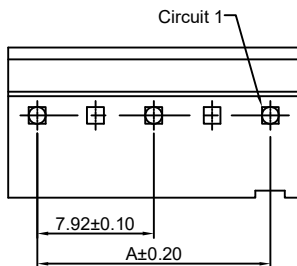
### HDGC3961WV-XP-R-A

7.92mm pitch 180° Wafer

#### Reference Informations:

- \*Material: Pin: Brass/Tin over Nickel  
Insulator: Nylon 66, UL94V-2
- \*Mates with HDGC3961H-XP(-2) or HDGC3964H-XP, HDGC3964H-XP-A, HDGC3964H-XP-C series Housing
- \*Color: Natural

- Ordering Information:  
**HDGC3961WV-XP-R-A** - \*\*\* - \*\*  
 1 2 3
1. Part No.
  2. Material:  
(blank): Nylon 66, UL94V-2  
V0: Nylon 66, UL94V-0  
GWT: Nylon 66, UL94V-0, GWT 750°C
  3. Finish:  
(blank): Tin over Nickel  
G: Gold over Nickel



#### Ordering Information & Dimensions:

PART NO.	Dimensions	
	A	B
3P	7.92	11.88
5P	15.84	19.80
7P	23.76	27.72
9P	31.68	35.64
11P	39.60	43.56
13P	47.52	51.48
15P	55.44	59.40
17P	63.36	67.32
19P	71.28	75.24

Unit: mm



## HDGC3961 Series 3.96mm (.156") -7.92mm (.312") Pitch Wire to Board Connector

### HDGC3961WVA-XP-R-A

7.92mm pitch 180° Wafer

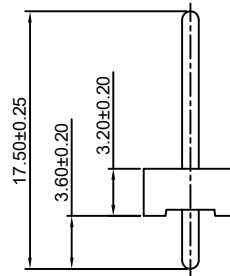
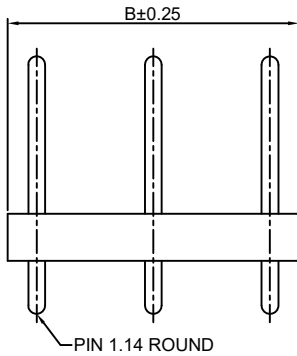
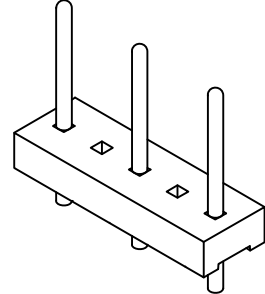
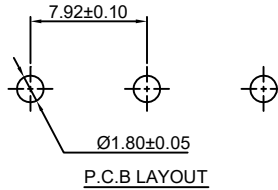
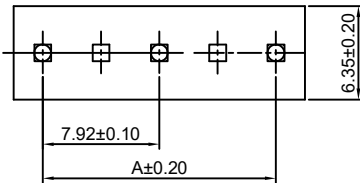
#### Reference Informations:

- \*Material: Pin: Brass/Tin over Nickel  
Insulator: Nylon 66, UL94V-2
- \*Mates with HDGC3961H-XP-2 or HDGC3964H-XP, HDGC3964H-XP-A, HDGC3964H-XP-C series Housing
- \*Color: Natural

#### Ordering Information:

HDGC3961WVA-XP-R-A - \*\*\* - \*\*  
1 2 3

- Part No.
- Material:  
(blank): Nylon 66, UL94V-2  
V0: Nylon 66, UL94V-0  
GWT: Nylon 66, UL94V-0, GWT 750°C
- Finish:  
(blank): Tin over Nickel  
G: Gold over Nickel



#### Ordering Information & Dimensions:

PART NO.	Dimensions	
	A	B
3P	7.92	11.88
5P	15.84	19.80
7P	23.76	27.72
9P	31.68	35.64
11P	39.60	43.56
13P	47.52	51.48
15P	55.44	59.40
17P	63.36	67.32
19P	71.28	75.24

Unit: mm

### HDGC3961WVB-XP

3.96mm pitch 180° Wafer

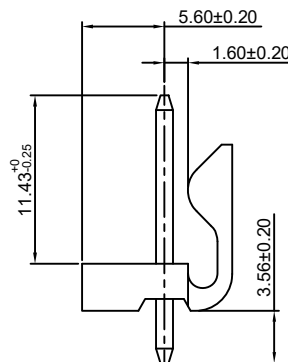
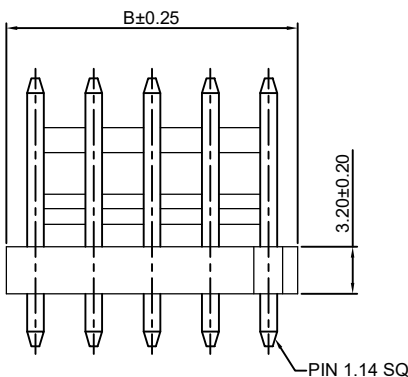
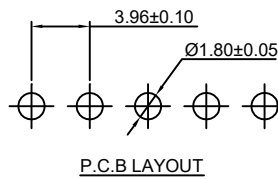
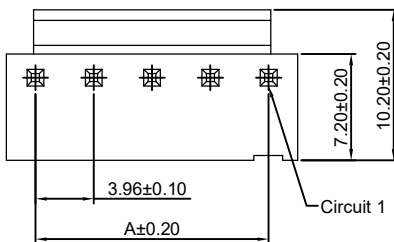
#### Reference Informations:

- \*Material: Pin: Brass/Tin over Nickel  
Insulator: Nylon 66, UL94V-0
- \*Mates with HDGC3961H-XP(-2/-3) or HDGC3964H-XP, HDGC3964H-XP-A, H-XP-B, H-XP-C series Housing
- \*Color: White

#### Ordering Information:

HDGC3961WVB-XP - \*\*\* - \*\*  
1 2 3

- Part No.
- Material:  
(blank): Nylon 66, UL94V-0  
GWT: Nylon 66, UL94V-0, GWT 750°C
- Finish:  
(blank): Tin over Nickel  
G: Gold over Nickel



#### Ordering Information & Dimensions:

PART NO.	Dimensions	
	A	B
2P	3.96	7.92
3P	7.92	11.88
4P	11.88	15.84
5P	15.84	19.80
6P	19.80	23.76
7P	23.76	27.72
8P	27.72	31.68
9P	31.68	35.64
10P	35.64	39.60
11P	39.60	43.56
12P	43.56	47.52
13P	47.52	51.48
14P	51.48	55.44
15P	55.44	59.40
16P	59.40	63.36
17P	63.36	67.32
18P	67.32	71.28
19P	71.28	75.24
20P	75.24	79.20

Unit: mm



# HDGC3961 SERIES



## HDGC3961 Series 3.96mm (.156") -7.92mm (.312") Pitch Wire to Board Connector

### HDGC3961WVB-F-XP

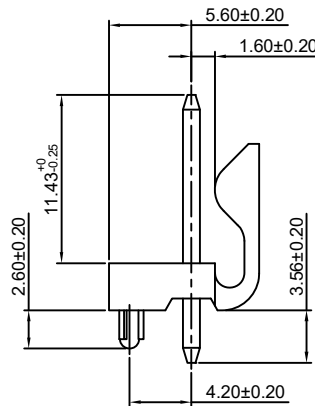
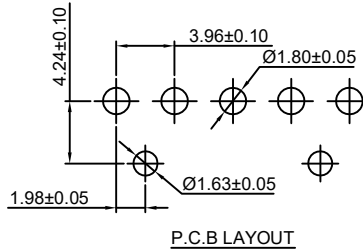
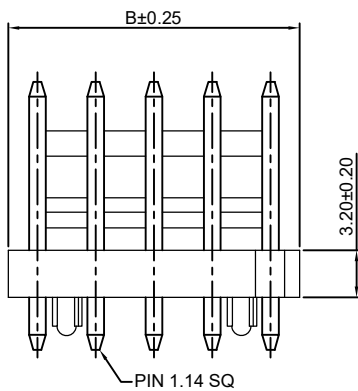
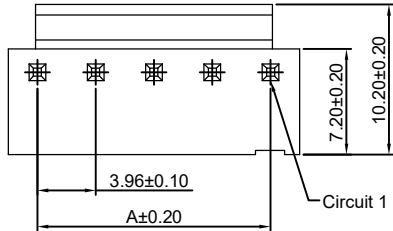
3.96mm pitch 180° Wafer

#### Reference Informations:

\*Material:Pin:Brass/Tin over Nickel  
Insulator:Nylon 66,UL94V-0

\*Mates with HDGC3961H-XP(-2/-3) or HDGC3964H-XP,  
HDGC3964H-XP-A,H-XP-B,H-XP-C series Housing

\*Color:White



#### Ordering Information:

HDGC3961WVB-F-XP - \*\*\* - \*\*  
1 2 3

1.Part No.

2.Material:

(blank):Nylon 66,UL94V-0

GWT:Nylon 66,UL94V-0,GWT 750°C

3.Finish:

(blank):Tin over Nickel

G:Gold over Nickel

#### Ordering Information & Dimensions:

PART NO.	Dimensions	
	A	B
2P	3.96	7.92
3P	7.92	11.88
4P	11.88	15.84
5P	15.84	19.80
6P	19.80	23.76
7P	23.76	27.72
8P	27.72	31.68
9P	31.68	35.64
10P	35.64	39.60
11P	39.60	43.56
12P	43.56	47.52
13P	47.52	51.48
14P	51.48	55.44
15P	55.44	59.40
16P	59.40	63.36
17P	63.36	67.32
18P	67.32	71.28
19P	71.28	75.24
20P	75.24	79.20

Unit: mm

### HDGC3961WRB-XP

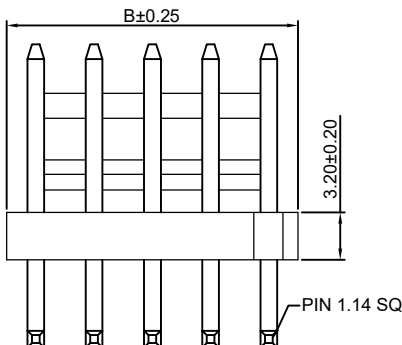
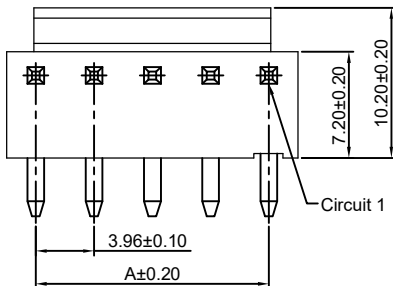
3.96mm pitch 90° Wafer

#### Reference Informations:

\*Material:Pin:Brass/Tin over Nickel  
Insulator:Nylon 66,UL94V-0

\*Mates with HDGC3961H-XP(-2/-3) or HDGC3964H-XP,  
HDGC3964H-XP-A,H-XP-B,H-XP-C series Housing

\*Color:White



#### Ordering Information:

HDGC3961WRB-XP - \*\*\* - \*\* - \*\*  
1 2 3 4

1.Part No.

2.Material:

(blank):Nylon 66,UL94V-0

GWT:Nylon 66,UL94V-0,GWT 750°C

3.Color:

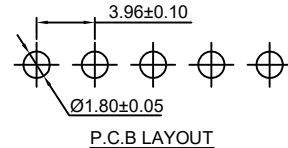
(blank):White

BK:Black

4.Finish:

(blank):Tin over Nickel

G:Gold over Nickel



#### Ordering Information & Dimensions:

PART NO.	Dimensions	
	A	B
2P	3.96	7.92
3P	7.92	11.88
4P	11.88	15.84
5P	15.84	19.80
6P	19.80	23.76
7P	23.76	27.72
8P	27.72	31.68
9P	31.68	35.64
10P	35.64	39.60
11P	39.60	43.56
12P	43.56	47.52
13P	47.52	51.48
14P	51.48	55.44
15P	55.44	59.40
16P	59.40	63.36
17P	63.36	67.32
18P	67.32	71.28
19P	71.28	75.24
20P	75.24	79.20
21P	79.20	83.16
22P	83.16	87.12
23P	87.12	91.08
24P	91.08	95.04

Unit: mm



## HDGC3961 Series 3.96mm (.156") -7.92mm (.312") Pitch Wire to Board Connector

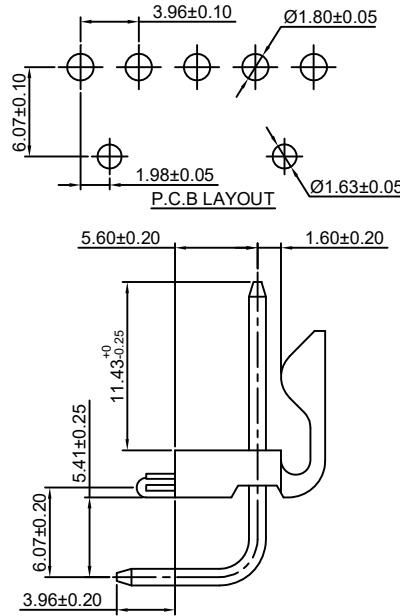
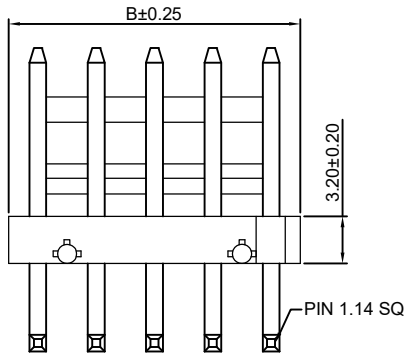
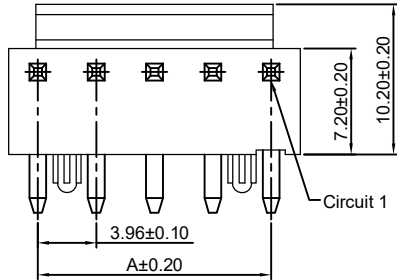
### HDGC3961WRB-F-XP

3.96mm pitch 90° Wafer

#### Reference Informations:

- \*Material: Pin: Brass/Tin over Nickel  
Insulator: Nylon 66, UL94V-0
- \*Mates with HDGC3961H-XP(-2/-3) or HDGC3964H-XP, HDGC3964H-XP-A, H-XP-B, H-XP-C series Housing
- \*Color: White

- Ordering Information:  
HDGC3961WRB-F-XP -  $\frac{***}{1} - \frac{**}{2} - \frac{**}{3}$
1. Part No.
  2. Material:  
(blank): Nylon 66, UL94V-0  
GWT: Nylon 66, UL94V-0, GWT 750°C
  3. Finish:  
(blank): Tin over Nickel  
G: Gold over Nickel



#### Ordering Information & Dimensions:

PART NO.	Dimensions	
	A	B
2P	3.96	7.92
3P	7.92	11.88
4P	11.88	15.84
5P	15.84	19.80
6P	19.80	23.76
7P	23.76	27.72
8P	27.72	31.68
9P	31.68	35.64
10P	35.64	39.60
11P	39.60	43.56
12P	43.56	47.52
13P	47.52	51.48
14P	51.48	55.44
15P	55.44	59.40
16P	59.40	63.36
17P	63.36	67.32
18P	67.32	71.28
19P	71.28	75.24
20P	75.24	79.20
21P	79.20	83.16
22P	83.16	87.12
23P	87.12	91.08
24P	91.08	95.04

Unit: mm

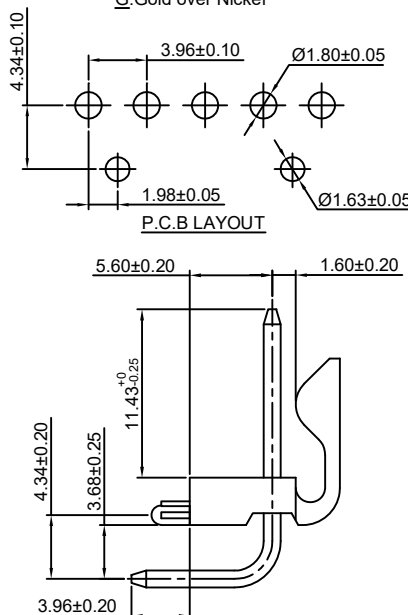
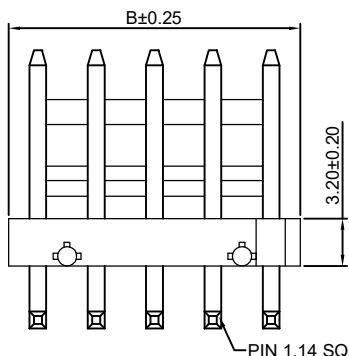
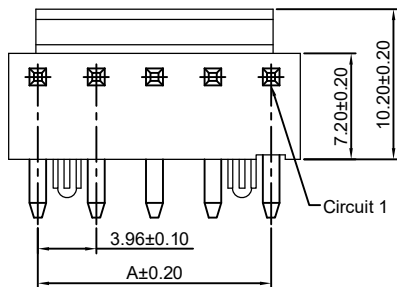
### HDGC3961WRB-F-L-XP

3.96mm pitch 90° Wafer

#### Reference Informations:

- \*Material: Pin: Brass/Tin over Nickel  
Insulator: Nylon 66, UL94V-0
- \*Mates with HDGC3961H-XP(-2/-3) or HDGC3964H-XP, HDGC3964H-XP-A, H-XP-B, H-XP-C series Housing
- \*Color: White

- Ordering Information:  
HDGC3961WRB-F-L-XP -  $\frac{***}{1} - \frac{**}{2} - \frac{**}{3}$
1. Part No.
  2. Material:  
(blank): Nylon 66, UL94V-0  
GWT: Nylon 66, UL94V-0, GWT 750°C
  3. Finish:  
(blank): Tin over Nickel  
G: Gold over Nickel



#### Ordering Information & Dimensions:

PART NO.	Dimensions	
	A	B
2P	3.96	7.92
3P	7.92	11.88
4P	11.88	15.84
5P	15.84	19.80
6P	19.80	23.76
7P	23.76	27.72
8P	27.72	31.68
9P	31.68	35.64
10P	35.64	39.60
11P	39.60	43.56
12P	43.56	47.52
13P	47.52	51.48
14P	51.48	55.44
15P	55.44	59.40
16P	59.40	63.36
17P	63.36	67.32
18P	67.32	71.28
19P	71.28	75.24
20P	75.24	79.20
21P	79.20	83.16
22P	83.16	87.12
23P	87.12	91.08
24P	91.08	95.04

Unit: mm



## HDGC3961 Series 3.96mm (.156") -7.92mm (.312") Pitch Wire to Board Connector

### HDGC3961WVC-XP

3.96mm pitch 180° Wafer

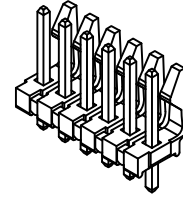
#### Reference Informations:

- \*Material: Pin: Brass/Tin over Nickel  
Insulator: Nylon 66, UL94V-0
- \*Mates with HDGC3961H-XP(-2) or HDGC3964H-XP, HDGC3964H-XP-A, HDGC3964H-XP-C series Housing
- \*Color: Black

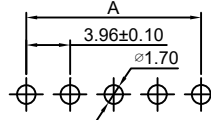
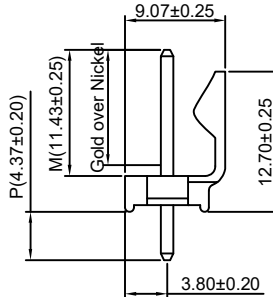
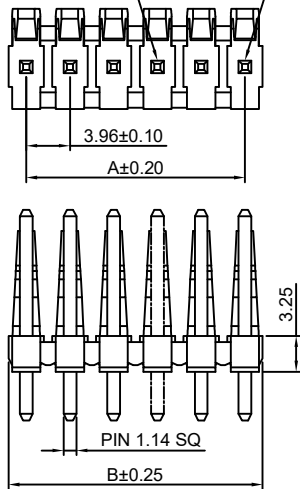
#### Ordering Information:

HDGC3961WVC-XP -  $\frac{***}{1} - \frac{***}{2} - \frac{***}{3} - \frac{***}{4}$

- Part No.
- Material:  
(blank): Nylon 66, UL94V-0  
V2: Nylon 66, UL94V-2  
GWT: Nylon 66, UL94V-0, GWT 750°C
- Finish  
(blank): Tin over Nickel  
G: Gold over Nickel (1u")  
G15: Gold over Nickel (15u")  
G20: Gold over Nickel (20u")  
G30: Gold over Nickel (30u")
- Size (P, M): See ①



Optional Voided CKT      Circuit 1



P.C.B LAYOUT

#### Ordering Information & Dimensions:

PART NO.	Dimensions	
	A	B
2P	3.96	7.16
3P	7.92	11.12
4P	11.88	15.08
5P	15.84	19.04
6P	19.80	23.00
7P	23.76	26.96
8P	27.72	30.92
9P	31.68	34.88
10P	35.64	38.84
11P	39.60	42.80
12P	43.56	46.76
13P	47.52	50.72
14P	51.48	54.68
15P	55.44	58.64
16P	59.40	62.60
17P	63.36	66.56
18P	67.32	70.52
19P	71.28	74.48
20P	75.24	78.44
21P	79.20	82.40
22P	83.16	86.36
23P	87.12	90.32
24P	91.08	94.28

Unit: mm

### HDGC3961WRC-XP

3.96mm pitch 90° Wafer

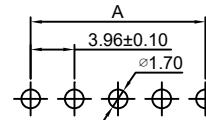
#### Reference Informations:

- \*Material: Pin: Brass/Tin over Nickel  
Insulator: Nylon 66, UL94V-0
- \*Mates with HDGC3961H-XP(-2) or HDGC3964H-XP, HDGC3964H-XP-A, HDGC3964H-XP-C series Housing
- \*Color: Black

#### Ordering Information:

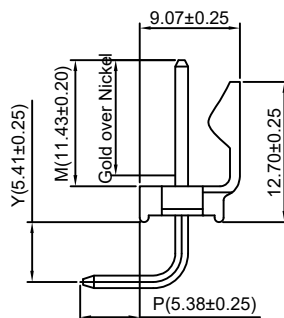
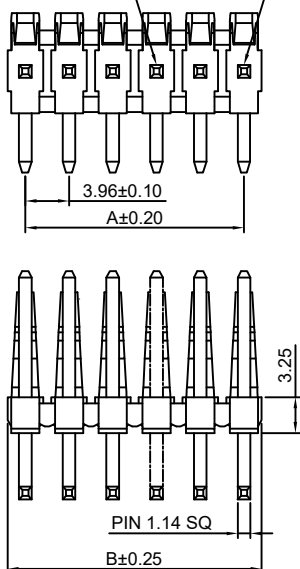
HDGC3961WRC-XP -  $\frac{***}{1} - \frac{***}{2} - \frac{***}{3} - \frac{***}{4}$

- Part No.
- Material:  
(blank): Nylon 66, UL94V-0  
V2: Nylon 66, UL94V-2  
GWT: Nylon 66, UL94V-0, GWT 750°C
- Finish  
(blank): Tin over Nickel  
G: Gold over Nickel (1u")  
G15: Gold over Nickel (15u")  
G20: Gold over Nickel (20u")  
G30: Gold over Nickel (30u")
- Size (P, M, Y): See ①



P.C.B LAYOUT

Optional Voided CKT      Circuit 1



#### Ordering Information & Dimensions:

PART NO.	Dimensions	
	A	B
2P	3.96	7.16
3P	7.92	11.12
4P	11.88	15.08
5P	15.84	19.04
6P	19.80	23.00
7P	23.76	26.96
8P	27.72	30.92
9P	31.68	34.88
10P	35.64	38.84
11P	39.60	42.80
12P	43.56	46.76
13P	47.52	50.72
14P	51.48	54.68
15P	55.44	58.64
16P	59.40	62.60
17P	63.36	66.56
18P	67.32	70.52
19P	71.28	74.48
20P	75.24	78.44
21P	79.20	82.40
22P	83.16	86.36
23P	87.12	90.32
24P	91.08	94.28

Unit: mm