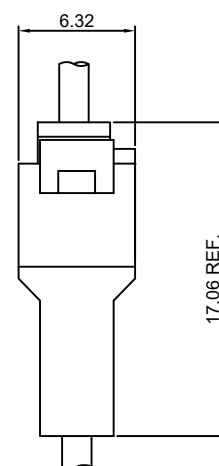
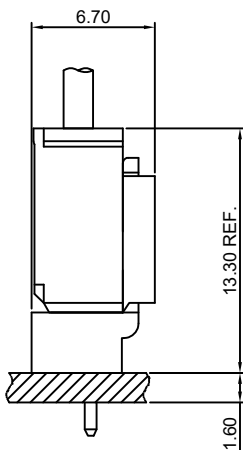
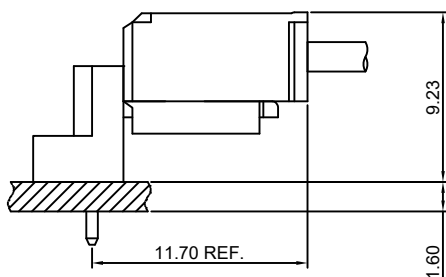


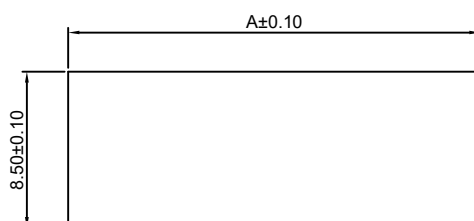
Specifications

- Current rating: 3A AC, DC
- Voltage rating: 250V AC, DC
- Temperature range: -25°C ~ +85°C
- Contact resistance: 20mΩ Max.
- Insulation resistance: 1000MΩ Min.
- Withstanding voltage: 1000V AC/minute
- *Compliant with RoHS and REACH*
- *Meet the HF/Halogen Free, need to customize*
- *Contact HDGC for details*

Assembly layout



Panel hole layout



PART NO.	Dimensions
	A
HDGC2517HM-2P	12.40
HDGC2517HM-3P	14.90
HDGC2517HM-4P	17.40
HDGC2517HM-5P	19.90
HDGC2517HM-6P	22.40
HDGC2517HM-7P	24.90
HDGC2517HM-8P	27.40
HDGC2517HM-9P	29.90
HDGC2517HM-10P	32.40
HDGC2517HM-11P	34.90
HDGC2517HM-12P	37.40

Unit:mm



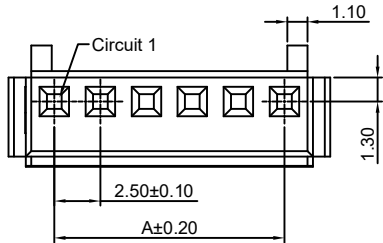
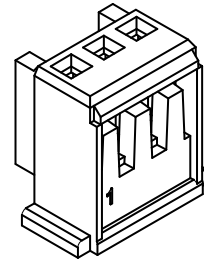
HDGC2517 Series 2.50mm (.098") Pitch Wire to Board and Wire to Wire Connector

HDGC2517HFA-XP

2.50mm Pitch Housing

Reference Informations:

- *Material: Nylon 66, UL94V-0
- *Suitable HDGC2509-T-A series Terminal
- *Mates with HDGC2517HM, HMA, HMB-XP series Housing or HDGC2517WV, WR-XP, WVR-XP series Wafer
- *Color: Beige



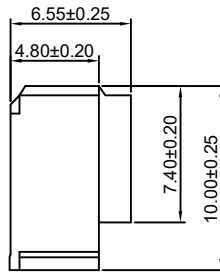
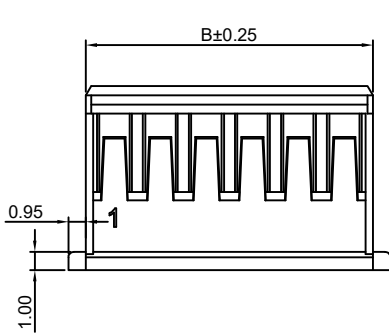
Ordering Information:
 $HDGC2517HFA-XP - \frac{***}{1} - \frac{**}{2} - \frac{**}{3}$

- Part No.
- Material:
(blank): Nylon 66, UL94V-0
GWT: Nylon 66, UL94V-0, GWT 750°C
- Color:
(blank): Beige
WH: White

Ordering Information & Dimensions:

PART NO.	Dimensions	
	A	B
2P	2.50	5.60
3P	5.00	8.10
4P	7.50	10.60
5P	10.00	13.10
6P	12.50	15.60
7P	15.00	18.10
8P	17.50	20.60
9P	20.00	23.10
10P	22.50	25.60
11P	25.00	28.10
12P	27.50	30.60
13P	30.00	33.10
14P	32.50	35.60
15P	35.00	38.10
16P	37.50	40.60
17P	40.00	43.10
18P	42.50	45.60
19P	45.00	48.10
20P	47.50	50.60

Unit: mm

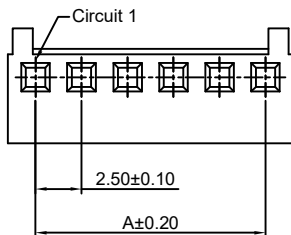
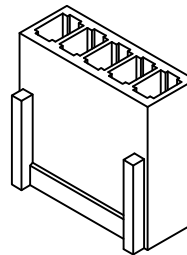


HDGC2517AH-XP

2.50mm Pitch Housing

Reference Informations:

- *Material: Nylon 66, UL94V-0
- *Suitable HDGC2543-T series Terminal
- *Mates with HDGC2517WV, WR-XP, HDGC2517WVR-XP series Wafer
- *Color: Beige



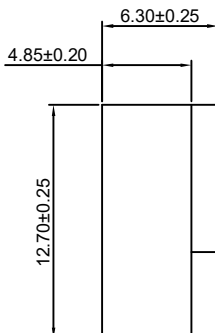
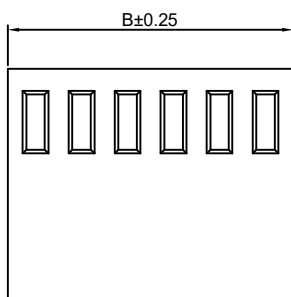
Ordering Information:
 $HDGC2517AH-XP - \frac{***}{1} - \frac{**}{2} - \frac{**}{3}$

- Part No.
- Material:
(blank): Nylon 66, UL94V-0
GWT: Nylon 66, UL94V-0, GWT 750°C
- Color:
(blank): Beige
WH: White

Ordering Information & Dimensions:

PART NO.	Dimensions	
	A	B
2P	2.50	5.50
3P	5.00	8.00
4P	7.50	10.50
5P	10.00	13.00
6P	12.50	15.50
7P	15.00	18.00
8P	17.50	20.50
9P	20.00	23.00
10P	22.50	25.50
11P	25.00	28.00
12P	27.50	30.50
13P	30.00	33.00
14P	32.50	35.50
15P	35.00	38.00
16P	37.50	40.50
17P	40.00	43.00
18P	42.50	45.50
19P	45.00	48.00
20P	47.50	50.50

Unit: mm





HDGC2517 Series 2.50mm (.098") Pitch Wire to Board and Wire to Wire Connector

HDGC2517HM-XP

2.50mm Pitch Housing

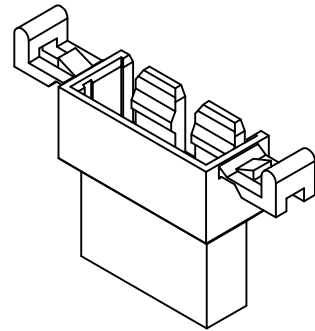
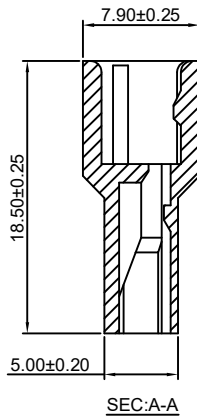
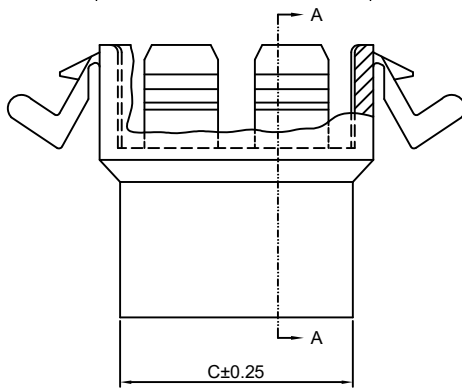
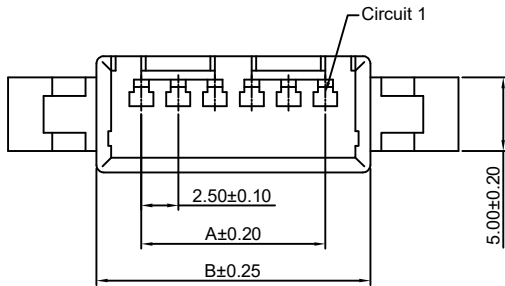
Reference Informations:

- *Material:Nylon 66, UL94V-0
- *Suitable HDGC2501M-T series Terminal
- *Mates with HDGC2517HFA-XP series Housing
- *Color:Beige

Ordering Information:

HDGC2517HM-XP - $\frac{***}{2}$ - $\frac{**}{3}$

- 1.Part No.
- 2.Material:
(blank):Nylon 66,UL94V-0
GWT:Nylon 66,UL94V-0,GWT 750°C
- 3.Color:
(blank):Beige
WH:White



Ordering Information & Dimensions:

PART NO.	Dimensions		
	A	B	C
2P	2.50	8.60	5.80
3P	5.00	11.10	8.30
4P	7.50	13.60	10.80
5P	10.00	16.10	13.30
6P	12.50	18.60	15.80
7P	15.00	21.10	18.30
8P	17.50	23.60	20.80
9P	20.00	26.10	23.30
10P	22.50	28.60	25.80
11P	25.00	31.10	28.30
12P	27.50	33.60	30.80

Unit: mm

HDGC2517HMA-XP

2.50mm Pitch Housing

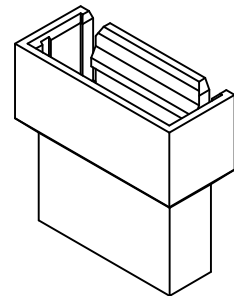
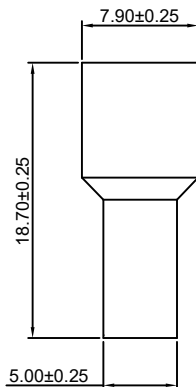
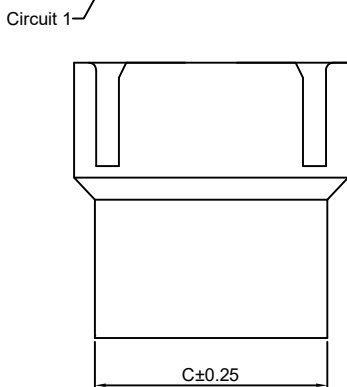
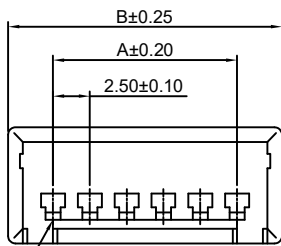
Reference Informations:

- *Material:Nylon 66, UL94V-0
- *Suitable HDGC2501M-T series Terminal
- *Mates with HDGC2517HFA-XP series Housing
- *Color:Beige

Ordering Information:

HDGC2517HMA-XP - $\frac{***}{2}$ - $\frac{**}{3}$

- 1.Part No.
- 2.Material:
(blank):Nylon 66,UL94V-0
GWT:Nylon 66,UL94V-0,GWT 750°C
- 3.Color:
(blank):Beige
WH:White



Ordering Information & Dimensions:

PART NO.	Dimensions		
	A	B	C
2P	2.50	8.60	5.80
3P	5.00	11.10	8.30
4P	7.50	13.60	10.80
5P	10.00	16.10	13.30
6P	12.50	18.60	15.80
7P	15.00	21.10	18.30
8P	17.50	23.60	20.80
9P	20.00	26.10	23.30
10P	22.50	28.60	25.80
11P	25.00	31.10	28.30
12P	27.50	33.60	30.80

Unit: mm



HDGC2517 SERIES



HDGC2517 Series 2.50mm (.098") Pitch Wire to Board and Wire to Wire Connector

HDGC2517HMB-XP

2.50mm Pitch Housing

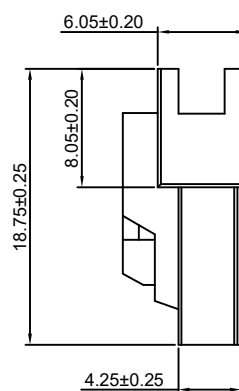
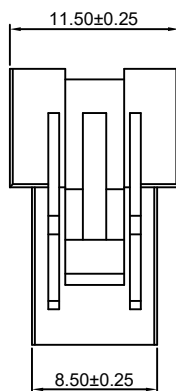
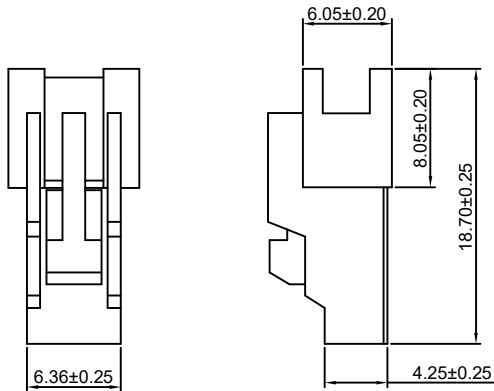
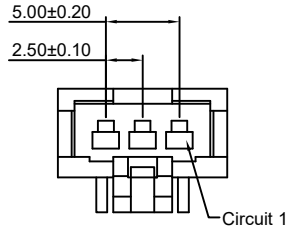
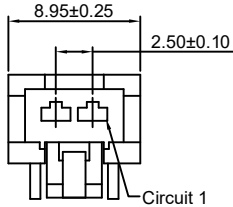
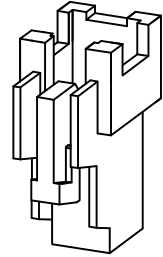
Reference Informations:

- *Material:Nylon 66, UL94V-0
- *Suitable HDGC2501M-T series Terminal
- *Mates with HDGC2517HFA-XP series Housing
- *Color:White

Ordering Information:

HDGC2517HMB-XP - ***
1 2

- 1.Part No.
- 2.Material:
(blank):Nylon 66,UL94V-0
GWT:Nylon 66,UL94V-0,GWT 750°C



2P

3P

HDGC2517WV-XP

2.50mm Pitch 180° Wafer

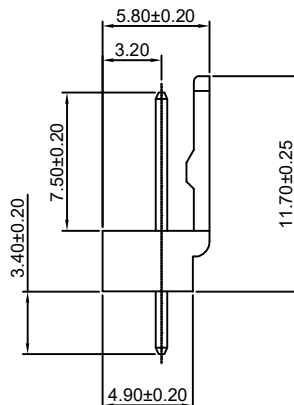
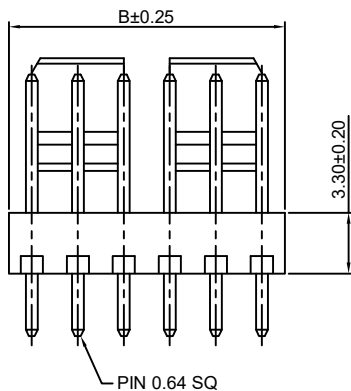
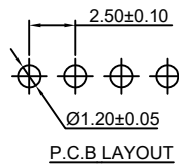
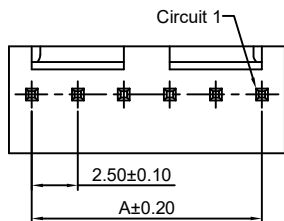
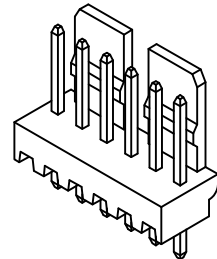
Reference Informations:

- *Material:Pin:Brass/Tin over Nickel
Insulator:Nylon 66,UL94V-0
- *Mates with HDGC2517HFA,AH-XP series Housing
- *Color:Beige

Ordering Information:

HDGC2517WV-XP - *** - **
1 2 3

- 1.Part No.
- 2.Material:
(blank):Nylon 66,UL94V-0
GWT:Nylon 66,UL94V-0,GWT 750°C
- 3.Finish:
(blank):Tin over Nickel
G:Gold over Nickel



Ordering Information & Dimensions:

PART NO.	Dimensions	
	A	B
2P	2.50	5.00
3P	5.00	7.50
4P	7.50	10.00
5P	10.00	12.50
6P	12.50	15.00
7P	15.00	17.50
8P	17.50	20.00
9P	20.00	22.50
10P	22.50	25.00
11P	25.00	27.50
12P	27.50	30.00
13P	30.00	32.50
14P	32.50	35.00
15P	35.00	37.50
16P	37.50	40.00
17P	40.00	42.50
18P	42.50	45.00
19P	45.00	47.50
20P	47.50	50.00

Unit: mm



HDGC2517 Series 2.50mm (.098") Pitch Wire to Board and Wire to Wire Connector

HDGC2517WR-XP

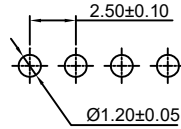
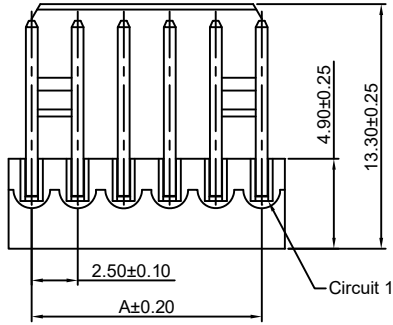
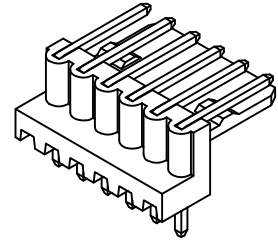
2.50mm Pitch 90° Wafer

Reference Informations:

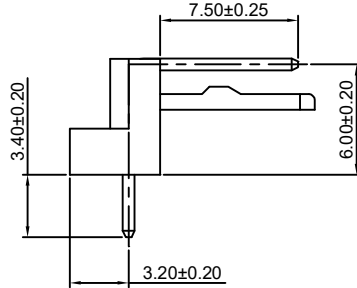
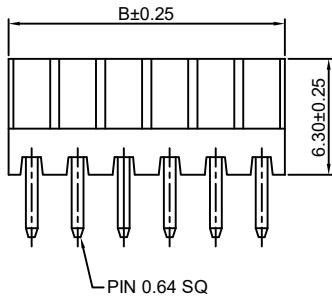
- *Material: Pin: Brass/Tin over Nickel
Insulator: Nylon 66, UL94V-0
- *Mates with HDGC2517HFA, AH-XP series Housing
- *Color: Beige

Ordering Information:
HDGC2517WR-XP - *** - **
 1 2 3

- Part No.
- Material:
(blank): Nylon 66, UL94V-0
GWT: Nylon 66, UL94V-0, GWT 750°C
- Finish:
(blank): Tin over Nickel
G: Gold over Nickel



P.C.B LAYOUT



Ordering Information & Dimensions:

PART NO.	Dimensions	
	A	B
2P	2.50	5.00
3P	5.00	7.50
4P	7.50	10.00
5P	10.00	12.50
6P	12.50	15.00
7P	15.00	17.50
8P	17.50	20.00
9P	20.00	22.50
10P	22.50	25.00
11P	25.00	27.50
12P	27.50	30.00
13P	30.00	32.50
14P	32.50	35.00
15P	35.00	37.50
16P	37.50	40.00
17P	40.00	42.50
18P	42.50	45.00
19P	45.00	47.50
20P	47.50	50.00

Unit: mm

HDGC2517WVR-XP

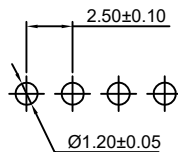
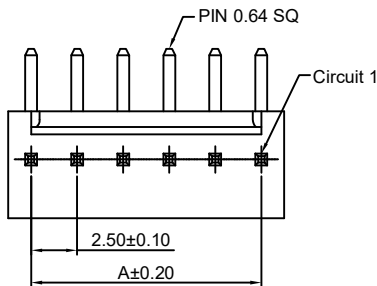
2.50mm Pitch 90° Wafer

Reference Informations:

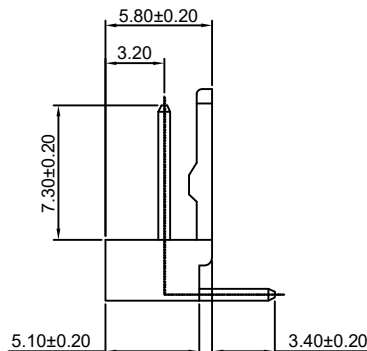
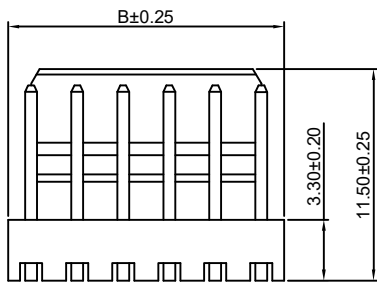
- *Material: Pin: Brass/Tin over Nickel
Insulator: Nylon 66, UL94V-0
- *Mates with HDGC2517HFA, AH-XP series Housing
- *Color: Beige

Ordering Information:
HDGC2517WVR-XP - *** - **
 1 2 3

- Part No.
- Material:
(blank): Nylon 66, UL94V-0
GWT: Nylon 66, UL94V-0, GWT 750°C
- Finish:
(blank): Tin over Nickel
G: Gold over Nickel



P.C.B LAYOUT



Ordering Information & Dimensions:

PART NO.	Dimensions	
	A	B
2P	2.50	5.00
3P	5.00	7.50
4P	7.50	10.00
5P	10.00	12.50
6P	12.50	15.00
7P	15.00	17.50
8P	17.50	20.00
9P	20.00	22.50
10P	22.50	25.00
11P	25.00	27.50
12P	27.50	30.00
13P	30.00	32.50
14P	32.50	35.00
15P	35.00	37.50
16P	37.50	40.00
17P	40.00	42.50
18P	42.50	45.00
19P	45.00	47.50
20P	47.50	50.00

Unit: mm