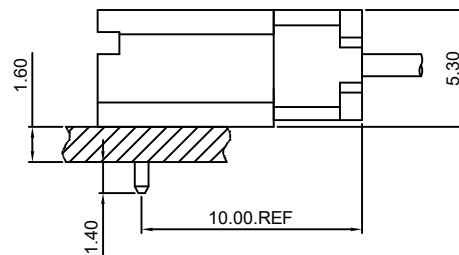
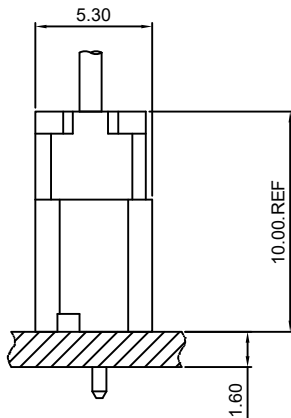


Specifications

- Current rating:3A AC,DC
- Voltage rating:500V AC,DC
- Temperature range:-25°C~+85°C
- Contact resistance:20mΩMax.
- Insulation resistance:500MΩMin.
- Withstanding voltage:1000V AC/minute
- *Compliant with RoHS and REACH*
- *Meet the HF/Halogen Freeneed to customize*
- *Contact HDGC for details*

Assembly layout





HDGC2511 Series 2.50mm (.098") Pitch Wire to Board Connector

HDGC2511H-XP

2.50mm Pitch Housing

Reference Informations:

- *Material:PBT,UL94V-0
- *Suitable HDGC2502-T series Terminal
- *Mates with HDGC2511WV,WR-XP series Wafer
- *Color:Black

Ordering Information:

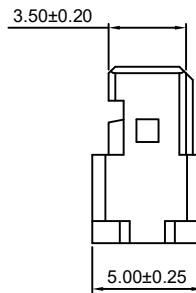
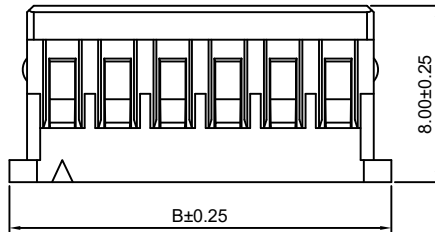
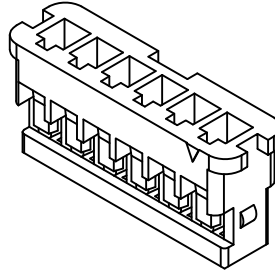
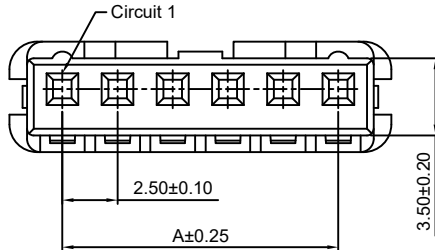
HDGC2511H-XP - ***
1 2

1.Part No.

2.Material:

(Blank):PBT,UL94V-0

GWT:PBT,UL94V-0,GWT 750°C



Ordering Information & Dimensions:

PART NO.	Dimensions	
	A	B
2P	2.50	7.30
3P	5.00	9.80
4P	7.50	12.30
5P	10.00	14.80
6P	12.50	17.30
7P	15.00	19.80
8P	17.50	22.30
9P	20.00	24.80
10P	22.50	27.30
11P	25.00	29.80
12P	27.50	32.30
13P	30.00	34.80
14P	32.50	37.30
15P	35.00	39.80

Unit: mm

HDGC2511WV-XP

2.50mm pitch 180° Wafer

Reference Informations:

- *Material:Pin:Brass/Tin over Nickel
Insulator:PBT,UL94V-0
- *Mates with HDGC2511H-XP series Housing
- *Color:Black

Ordering Information:

HDGC2511WV-XP - *** - **
1 2 3

1.Part No.

2.Material:

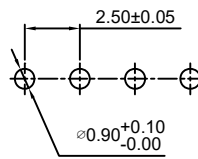
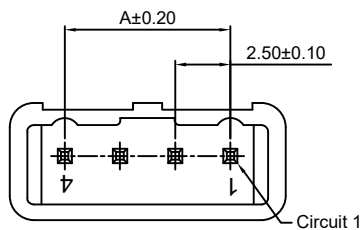
(Blank):PBT,UL94V-0

GWT:PBT,UL94V-0,GWT 750°C

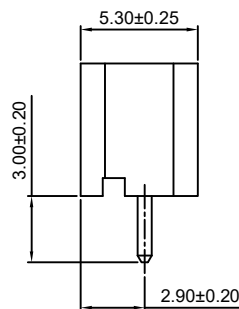
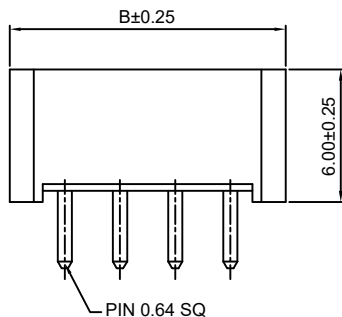
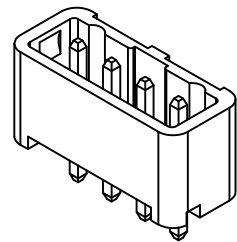
3.Finish:

(blank):Tin over Nickel

G:Gold over Nickel



P.C.B LAYOUT



Ordering Information & Dimensions:

PART NO.	Dimensions	
	A	B
2P	2.50	7.50
3P	5.00	10.00
4P	7.50	12.50
5P	10.00	15.00
6P	12.50	17.50
7P	15.00	20.00
8P	17.50	22.50
9P	20.00	25.00
10P	22.50	27.50
11P	25.00	30.00
12P	27.50	32.50
13P	30.00	35.00
14P	32.50	37.50
15P	35.00	40.00

Unit: mm



HDGC2511 Series 2.50mm (.098") Pitch Wire to Board Connector

HDGC2511WR-XP

2.50mm pitch 90° Wafer

Reference Informations:

*Material: Pin: Brass/Tin over Nickel
Insulator: PBT, UL94V-0

*Mates with HDGC2511H-XP series Housing

*Color: Black

Ordering Information:

HDGC2511WR-XP - *** - **
1 2 3

1. Part No.

2. Material:

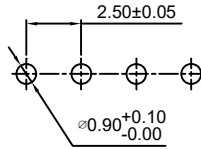
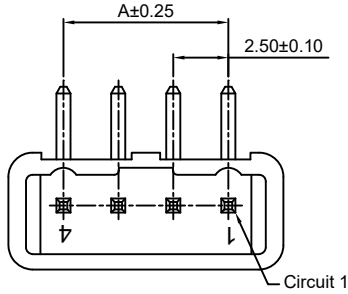
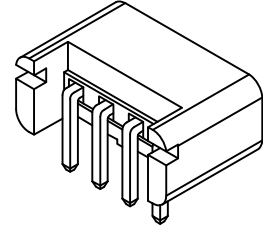
(Blank): PBT, UL94V-0

GWT: PBT, UL94V-0, GWT 750 °C

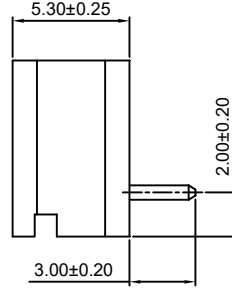
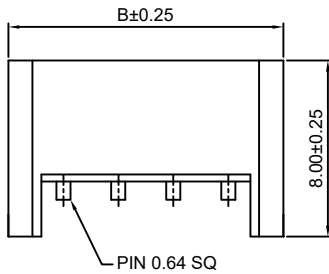
3. Finish:

(blank): Tin over Nickel

G: Gold over Nickel



P.C.B LAYOUT



Ordering Information & Dimensions:

PART NO.	Dimensions	
	A	B
2P	2.50	7.50
3P	5.00	10.00
4P	7.50	12.50
5P	10.00	15.00
6P	12.50	17.50
7P	15.00	20.00
8P	17.50	22.50
9P	20.00	25.00
10P	22.50	27.50
11P	25.00	30.00
12P	27.50	32.50
13P	30.00	35.00
14P	32.50	37.50
15P	35.00	40.00

Unit: mm